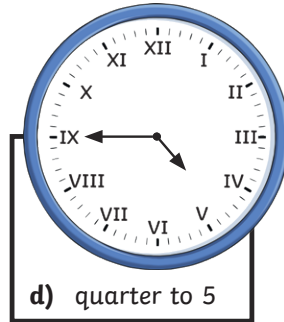
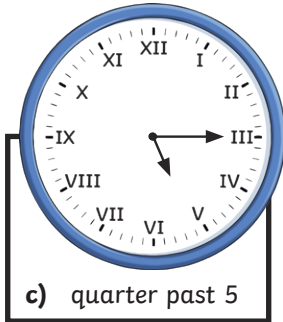
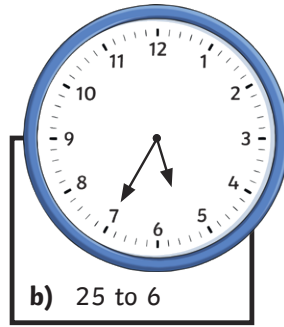
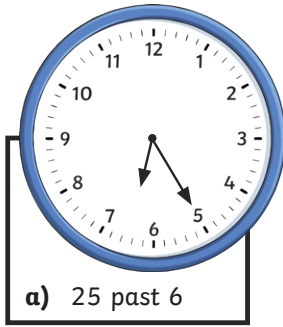




- 1) a) quarter to 1
 b) 25 minutes past 2

2)



- 3) a) XI
 b) VIII



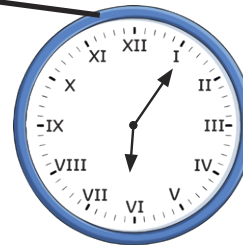
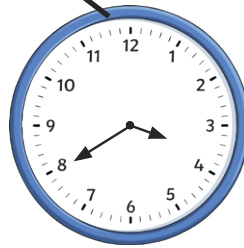
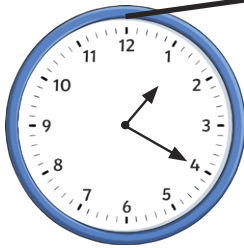
1)

5 minutes past 6

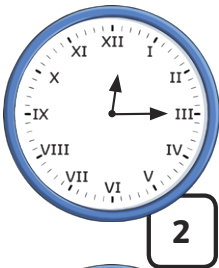
20 minutes to 4

20 minutes past 3

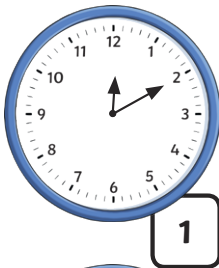
20 minutes past 1



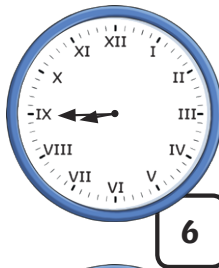
2)



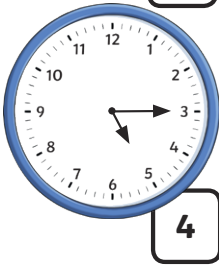
2



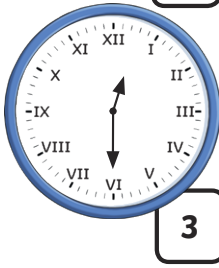
1



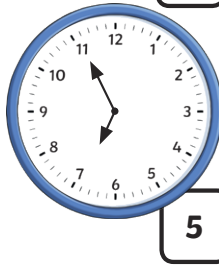
6



4



3



5

3) Matthew is correct. The time shows ten minutes to five. The hour hand is not touching 5 o'clock because there are still ten minutes to pass before it is 5 o'clock.

1) As the hour hand sits halfway between the 3 and the 4, it is most likely that the time could be half past 3. However, other times close to this may also be considered correct.

2) Jenson is correct. VIII represents the number 8 on the clockface.

3) a) The second clockface, showing quarter past 1, would have been the latest time that year 3 could have taken their seats.

b) Year 3 would have been late to the show. The show started at 20 past 1 but they sat down at 25 to 2.

4) quarter past any 7 or 8

half past 7 or 8

quarter to 8 or 9

7 o'clock, 8 o'clock or 9 o'clock

