

- 1) Order the durations of the TV shows from shortest to longest.



1

Twinkl News
10:55 - 11:00

2

Twinkl Toons
09:00 - 11:20

3

Twinkl Sports Show
10:20 - 11:35

4

Twinkl Tots
09:00 - 10:05



shortest

longest

- 2) a) Write the duration of each lesson in the table below.

Lesson	Start Time	Finish Time	Duration
Maths	09:05	10:10	
Break	10:10	10:35	
English	10:35	11:50	
Lunchtime	11:50	12:40	

Are the following statements true or false? Explain your answers.

- b) Lunchtime is longer than English.
c) Maths is longer than English.
- 3) a) Hamed read for 35 minutes. Circle the box below that shows the time he started reading to the time he stopped reading.

08:30 - 09:00

08:20 - 08:55

10:35 - 11:00

10:20 - 10:50

- b) Hamed goes out at breaktime. It lasts 25 minutes. What time duration above shows breaktime at Hamed's school?

- 1) Order the durations of the TV shows from shortest to longest.



1

Twinkl News
10:55 - 11:00

2

Twinkl Toons
09:00 - 11:20

3

Twinkl Sports Show
10:20 - 11:35

4

Twinkl Tots
09:00 - 10:05



shortest

longest

- 2) a) Write the duration of each lesson in the table below.

Lesson	Start Time	Finish Time	Duration
Maths	09:05	10:10	
Break	10:10	10:35	
English	10:35	11:50	
Lunchtime	11:50	12:40	

Are the following statements true or false? Explain your answers.

- b) Lunchtime is longer than English.
c) Maths is longer than English.
- 3) a) Hamed read for 35 minutes. Circle the box below that shows the time he started reading to the time he stopped reading.

08:30 - 09:00

08:20 - 08:55

10:35 - 11:00

10:20 - 10:50

- b) Hamed goes out at breaktime. It lasts 25 minutes. What time duration above shows breaktime at Hamed's school?

- 1) Sadie is meeting her friends in 1 hour and 5 minutes.



Before she goes, she needs to:

- walk the dog for 20 minutes;
- eat her lunch for 15 minutes;
- tidy her room for 10 minutes.

If it takes Sadie 10 minutes to walk to her friend's house, will she be late? Explain your answer.

- 2) Amana arrived at a party 5 minutes after it started. Barry arrived 10 minutes after Amana. Carole arrived at 11:40, which was 20 minutes after Barry.

- a) What time did the party start?

Name	Time
Carole arrived	
Barry arrived	
Amanda arrived	
Party started	

- b) How long had Amana been at the party before Carole arrived?

- 3) Maths starts at



and finishes at



at Twinkl primary school.

Two children worked out the duration of maths.



I counted fifty minutes and then added the extra five minutes.

Lauren



I added an hour on and subtracted five minutes.

Hamish

Whose method is correct? Explain your answer.

- 1) Sadie is meeting her friends in 1 hour and 5 minutes.



Before she goes, she needs to:

- walk the dog for 20 minutes;
- eat her lunch for 15 minutes;
- tidy her room for 10 minutes.

If it takes Sadie 10 minutes to walk to her friend's house, will she be late? Explain your answer.

- 2) Amana arrived at a party 5 minutes after it started. Barry arrived 10 minutes after Amana. Carole arrived at 11:40, which was 20 minutes after Barry.

- a) What time did the party start?

Name	Time
Carole arrived	
Barry arrived	
Amanda arrived	
Party started	

- b) How long had Amana been at the party before Carole arrived?

- 3) Maths starts at



and finishes at



at Twinkl primary school.

Two children worked out the duration of maths.



I counted fifty minutes and then added the extra five minutes.

Lauren



I added an hour on and subtracted five minutes.

Hamish

Whose method is correct? Explain your answer.

- 1) The timetable shows the times that buses depart and arrive each morning.



Bus Number	Departs	Arrives
256	09:00	09:25
9	09:25	09:55
265	09:55	10:45
14	10:45	11:50

- a) Do you agree with Sam? Explain your answer.



The journey on the 265 bus is longer than the 14 bus.

Sam

- b) Do you agree with Ravel? Explain your answer.



If I caught the number 256 and then the number 9 bus, my total journey time would be under 50 minutes.

Ravel

- 2) Two children in year 3 are discussing the amount of time they read for.



I read for three-quarters of an hour but stopped for a break of seven minutes. I read for the longest amount of time.

George

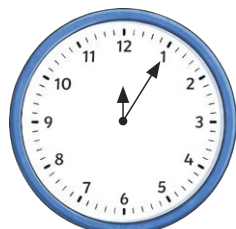


I read from seven o'clock until ten minutes to eight but stopped for a break of twelve minutes. I read for the longest amount of time.

Keira

Which child do you agree with?
Explain your answer.

- 3) How many ways can you calculate the duration shown by the two clock faces?



- 1) The timetable shows the times that buses depart and arrive each morning.



Bus Number	Departs	Arrives
256	09:00	09:25
9	09:25	09:55
265	09:55	10:45
14	10:45	11:50

- a) Do you agree with Sam? Explain your answer.



The journey on the 265 bus is longer than the 14 bus.

Sam

- b) Do you agree with Ravel? Explain your answer.



If I caught the number 256 and then the number 9 bus, my total journey time would be under 50 minutes.

Ravel

- 2) Two children in year 3 are discussing the amount of time they read for.



I read for three-quarters of an hour but stopped for a break of seven minutes. I read for the longest amount of time.

George



I read from seven o'clock until ten minutes to eight but stopped for a break of twelve minutes. I read for the longest amount of time.

Keira

Which child do you agree with?
Explain your answer.

- 3) How many ways can you calculate the duration shown by the two clock faces?

