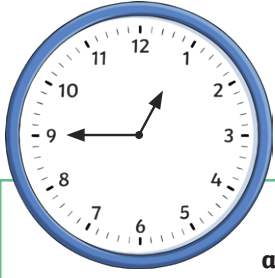
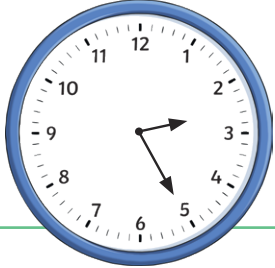


1) Write the time shown on each clock.

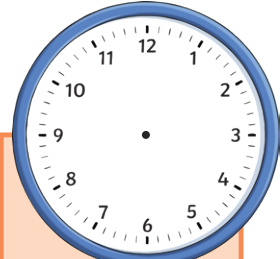


a) _____ to _____

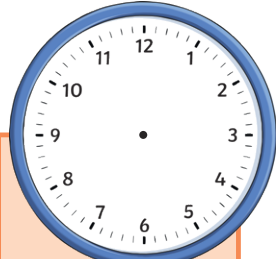


b) _____ minutes past _____

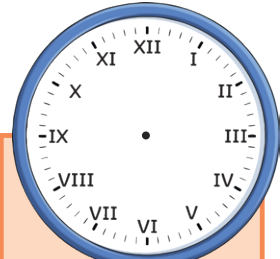
2) Draw hands to show the times given.



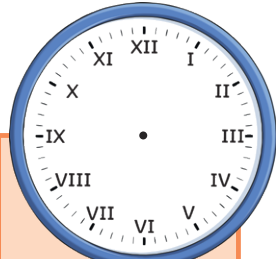
a) 25 past 6



b) 25 to 6



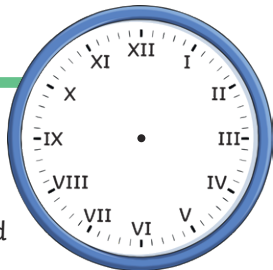
c) quarter past 5



d) quarter to 5

3) This clock uses Roman numerals.

a) If the clock shows 5 minutes to 8, what Roman numeral should the minute hand be pointing to?



XI

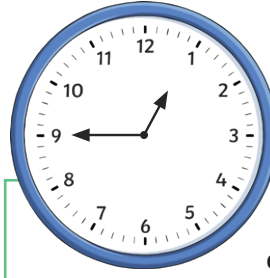
X

IV

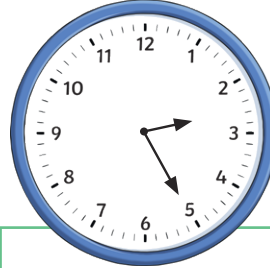
VIII

b) What Roman numeral should the hour hand be pointing to when the clock shows 8 o'clock?

1) Write the time shown on each clock.

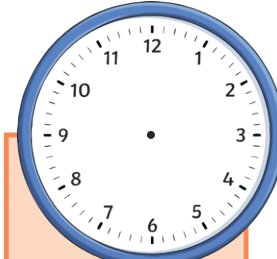


a) _____ to _____

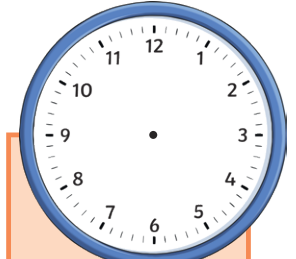


b) _____ minutes past _____

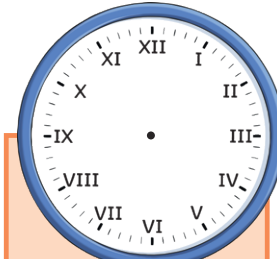
2) Draw hands to show the times given.



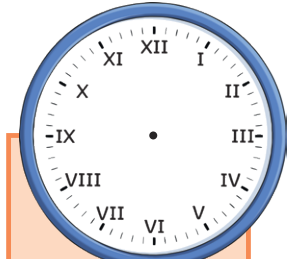
a) 25 past 6



b) 25 to 6



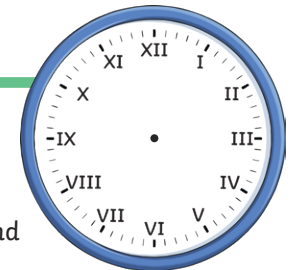
c) quarter past 5



d) quarter to 5

3) This clock uses Roman numerals.

a) If the clock shows 5 minutes to 8, what Roman numeral should the minute hand be pointing to?



XI

X

IV

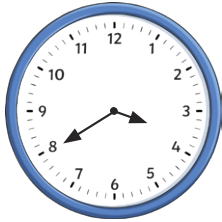
VIII

b) What Roman numeral should the hour hand be pointing to when the clock shows 8 o'clock?

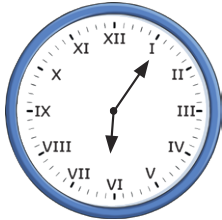
- 1) Match the time to the correct clock face.
Which time is left over?



5 minutes past 6



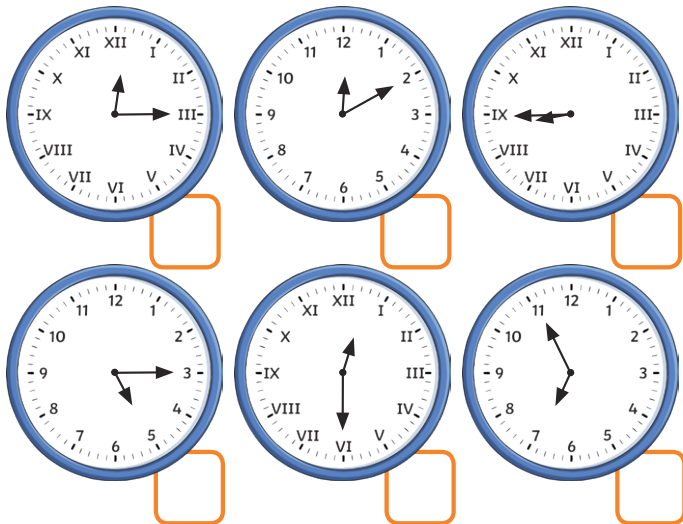
20 minutes to 4



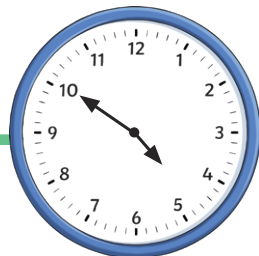
20 minutes past 3

20 minutes past 1

- 2) Each clockface shows times in the afternoon or evening. Order the times from earliest (1) to latest (6).



- 3) Year 3 are discussing the time shown on the analogue clock.



The hour hand isn't on 5 so it must be ten minutes to 4.

Phoebe

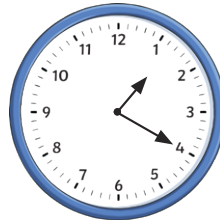
The clock shows ten minutes to five.



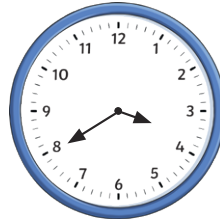
Matthew

Which of the children do you agree with? Explain your answer fully.

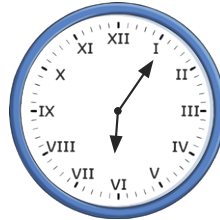
- 1) Match the time to the correct clock face.
Which time is left over?



5 minutes past 6



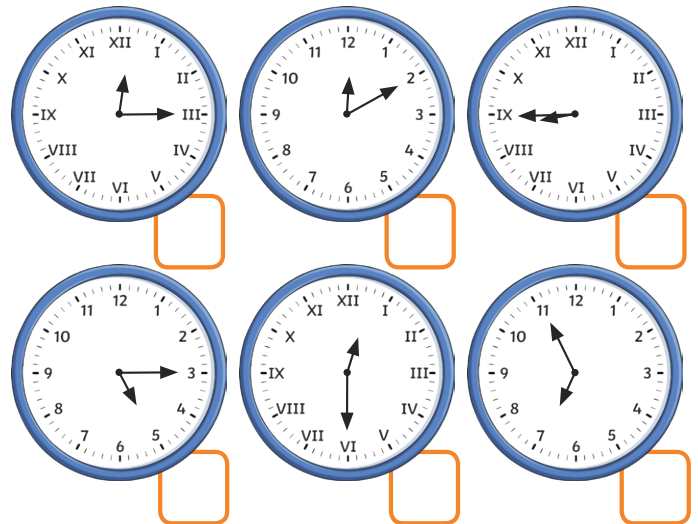
20 minutes to 4



20 minutes past 3

20 minutes past 1

- 2) Each clockface shows times in the afternoon or evening. Order the times from earliest (1) to latest (6).



- 3) Year 3 are discussing the time shown on the analogue clock.



The hour hand isn't on 5 so it must be ten minutes to 4.

Phoebe

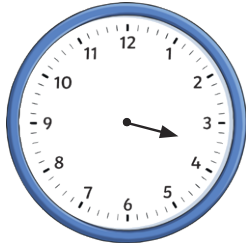
The clock shows ten minutes to five.



Matthew

Which of the children do you agree with? Explain your answer fully.

- 1) The clock face has lost its minute hand. What time could it be? Explain your answer.



- 2) Two friends draw 20 minutes to 7 on an analogue clock that uses Roman numerals.



Sunni

The minute hand will be on VII.

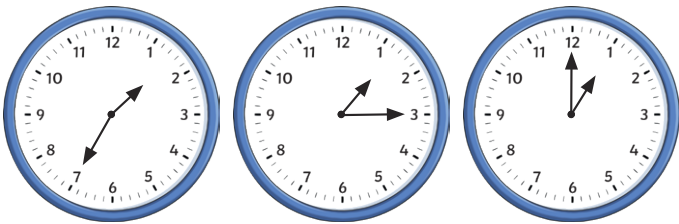
The minute hand will be on VIII.



Jenson

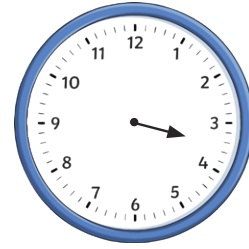
Which of the two friends do you agree with? Explain fully.

- 3) Year 3 went to the theatre. The show started at 20 past 1.



- a) Which of the clock faces show the latest time that year 3 could have sat in their seats, without missing any of the show. Explain fully.
- b) If year 3 sat in their seats at the time shown on the first clock, would they have been early or late? Explain your answer.
- 4) What times between 7 o'clock and 9 o'clock can you find where the minute hand points to a multiple of 3? Explore.

- 1) The clock face has lost its minute hand. What time could it be? Explain your answer.



- 2) Two friends draw 20 minutes to 7 on an analogue clock that uses Roman numerals.



Sunni

The minute hand will be on VII.

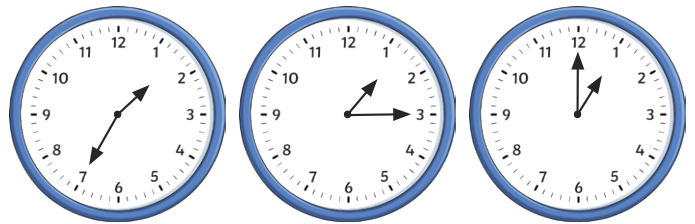
The minute hand will be on VIII.



Jenson

Which of the two friends do you agree with? Explain fully.

- 3) Year 3 went to the theatre. The show started at 20 past 1.



- a) Which of the clock faces show the latest time that year 3 could have sat in their seats, without missing any of the show. Explain fully.
- b) If year 3 sat in their seats at the time shown on the first clock, would they have been early or late? Explain your answer.
- 4) What times between 7 o'clock and 9 o'clock can you find where the minute hand points to a multiple of 3? Explore.