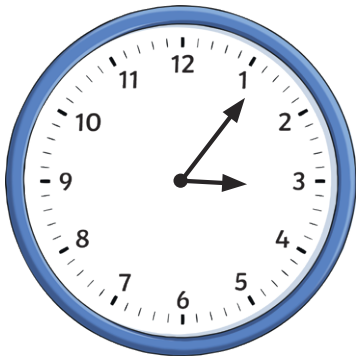
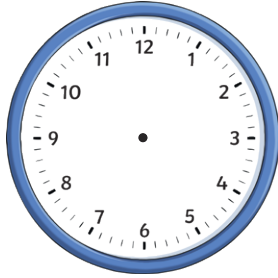
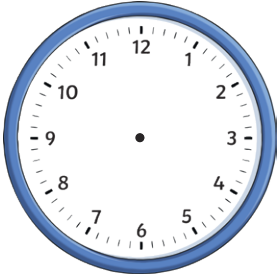


1) How many minutes past the hour does the clock show?

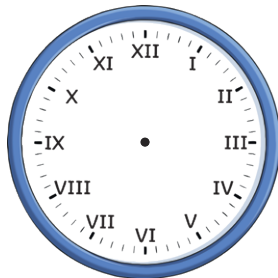
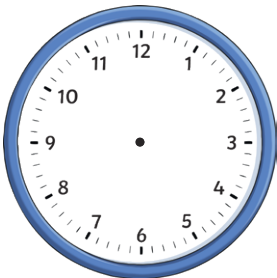


2) Draw hands on each clock face to show the correct time.



a) six minutes to 5

b) seven minutes past 4

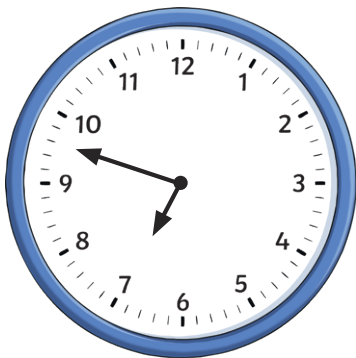


c) sixteen minutes past 7

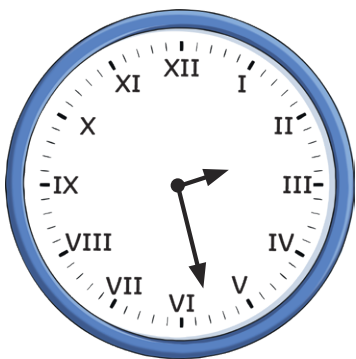
d) sixteen minutes to 7

3) In words, write the times shown below.

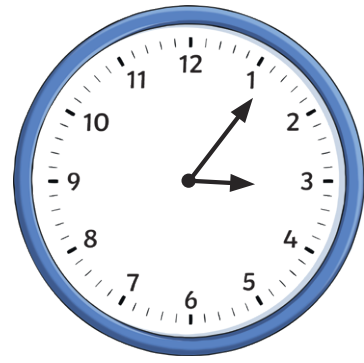
a)



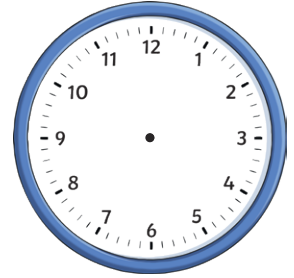
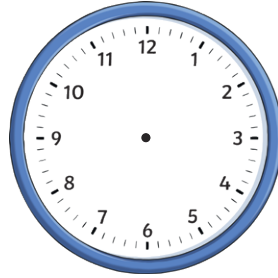
b)



1) How many minutes past the hour does the clock show?

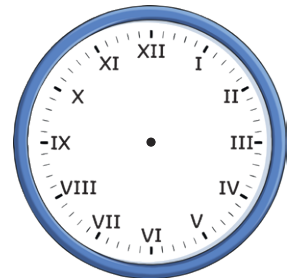
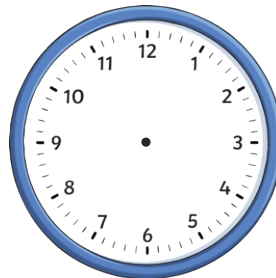


2) Draw hands on each clock face to show the correct time.



a) six minutes to 5

b) seven minutes past 4

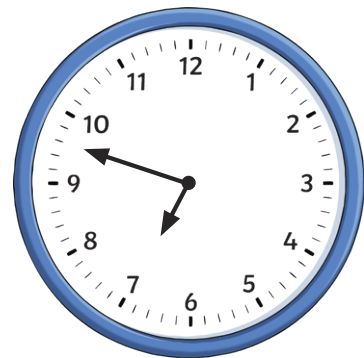


c) sixteen minutes past 7

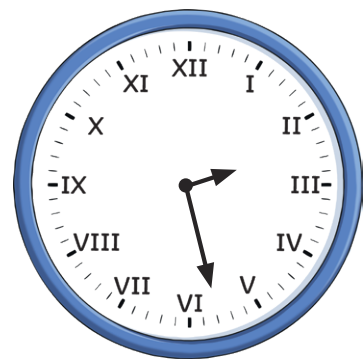
d) sixteen minutes to 7

3) In words, write the times shown below.

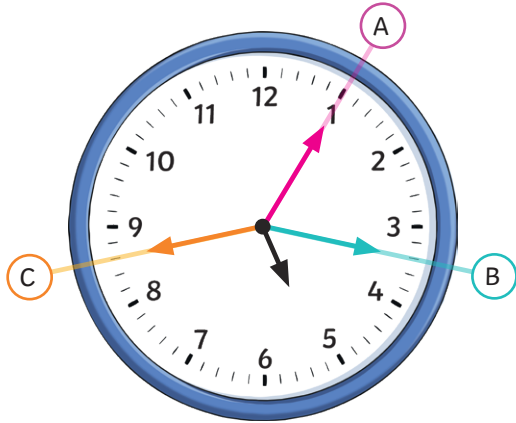
a)



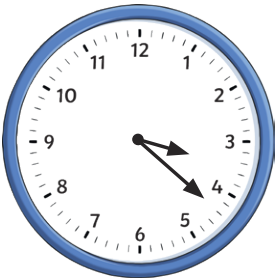
b)



- 1) The time shows seventeen minutes past 5. Which minute hand is correctly positioned? Explain your answer fully.



- 2) Match the time in words to the correct clock face. Circle the time that is left over.



six minutes to 6



six minutes past 6

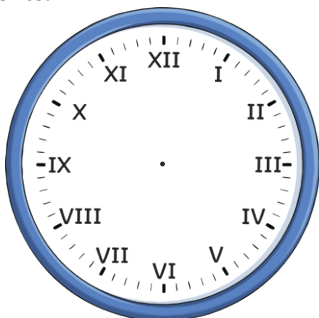


twenty-two minutes past 3

twenty-two minutes to 1

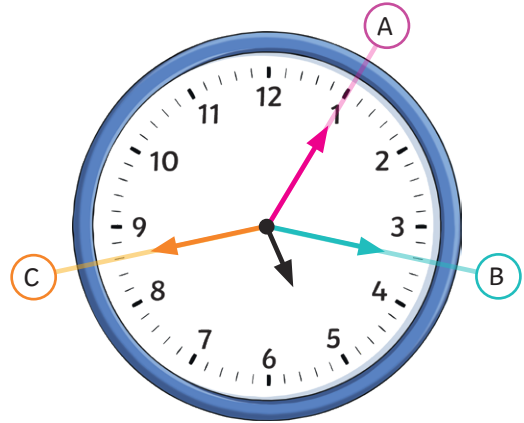
- 3) Jason needs to be at the park at half past 8. It takes him 19 minutes to walk there.

- a) Draw hour and minute hands on the clock face to show the exact time that Jason should leave home.



- b) If Jason stays at the park for 30 minutes, what time will he get home?

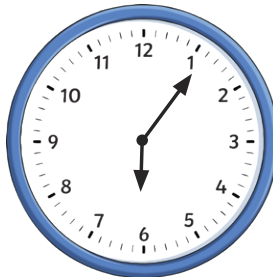
- 1) The time shows seventeen minutes past 5. Which minute hand is correctly positioned? Explain your answer fully.



- 2) Match the time in words to the correct clock face. Circle the time that is left over.



six minutes to 6



six minutes past 6

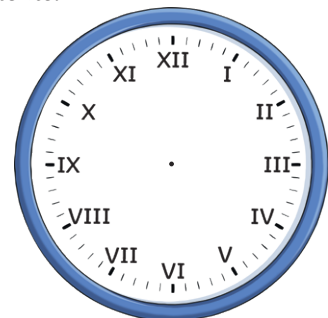


twenty-two minutes past 3

twenty-two minutes to 1

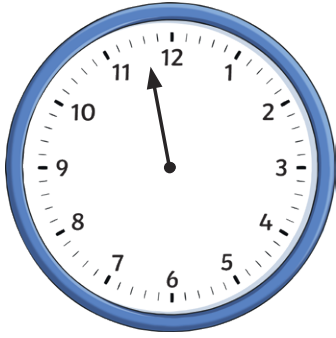
- 3) Jason needs to be at the park at half past 8. It takes him 19 minutes to walk there.

- a) Draw hour and minute hands on the clock face to show the exact time that Jason should leave home.



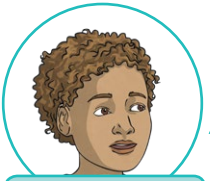
- b) If Jason stays at the park for 30 minutes, what time will he get home?

- 1) a) The clock face has lost its hour hand. What time could it be? Explain your answer.



- b) Find all the possible answers.

- 2) Two friends draw fourteen minutes to 10 on an analogue clock.



The minute hand is closer to 12 than the hour hand.

Lionel

The hour hand is closer to 12 than the minute hand.



Kaiden

Which of the two friends do you agree with? Explain fully.

- 3) Emily and James are practising for a school music concert.

Emily practises for 17 minutes and starts at five past 1.

James practices for 26 minutes and starts at four minutes to 1.



I started practising later so I will finish later than you.

Emily

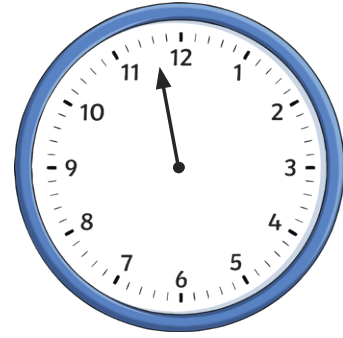
I practised for longer so I will finish later than you.



James

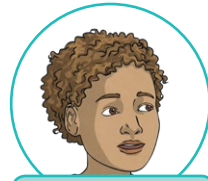
- a) At what time does each child finish?
b) Who is correct? Explain your answer fully.

- 1) a) The clock face has lost its hour hand. What time could it be? Explain your answer.



- b) Find all the possible answers.

- 2) Two friends draw fourteen minutes to 10 on an analogue clock.



The minute hand is closer to 12 than the hour hand.

Lionel

The hour hand is closer to 12 than the minute hand.



Kaiden

Which of the two friends do you agree with? Explain fully.

- 3) Emily and James are practising for a school music concert.

Emily practises for 17 minutes and starts at five past 1.

James practices for 26 minutes and starts at four minutes to 1.



I started practising later so I will finish later than you.

Emily

I practised for longer so I will finish later than you.



James

- a) At what time does each child finish?
b) Who is correct? Explain your answer fully.