

- 1) Sort these activities into which ones you would do in the morning and which ones you would do in the afternoon. Which activities could go in both groups?



go to an afterschool club

walk home from school

have a shower

brush my teeth

eat breakfast

walk to school

- 2) Sort these lessons into order from earliest to latest.

**Maths**

9:45 a.m.

**Spanish**

11:20 a.m.

**Assembly**

12:15 p.m.

**Art**

2:20 p.m.

**Spelling**

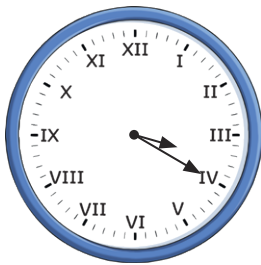
8:55 a.m.

**PE**

1:35 p.m.

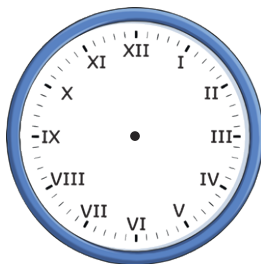
- 3) Show these times on both analogue and digital clocks. One has been done for you.

20 past 3 in the afternoon

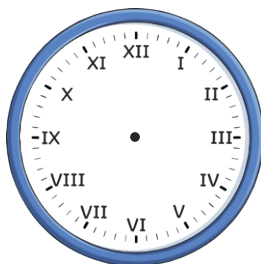


3:20 p.m.

6 o'clock in the morning



10 minutes past 11 in the evening



- 1) Sort these activities into which ones you would do in the morning and which ones you would do in the afternoon. Which activities could go in both groups?



go to an afterschool club

walk home from school

have a shower

brush my teeth

eat breakfast

walk to school

- 2) Sort these lessons into order from earliest to latest.

**Maths**

9:45 a.m.

**Spanish**

11:20 a.m.

**Assembly**

12:15 p.m.

**Art**

2:20 p.m.

**Spelling**

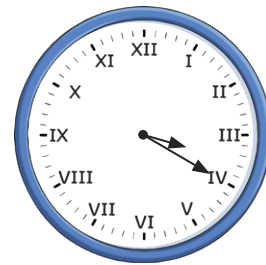
8:55 a.m.

**PE**

1:35 p.m.

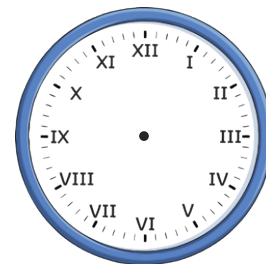
- 3) Show these times on both analogue and digital clocks. One has been done for you.

20 past 3 in the afternoon

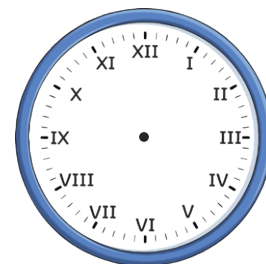


3:20 p.m.

6 o'clock in the morning



10 minutes past 11 in the evening

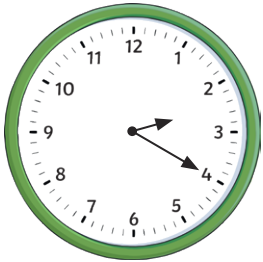


- 1) Liza matched the digital time to the analogue time. Is she correct? If not, explain her mistake.



6:00 p.m.

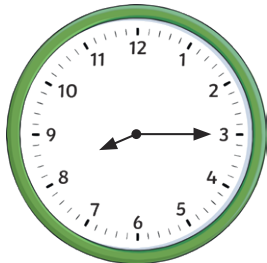
- 2) James woke up and saw this time on his clock:



It was 2:20 p.m. because it was night time.

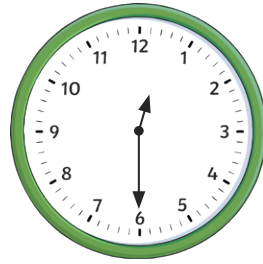
Do you agree with James? Explain your answer.

- 3) After having a shower, Sofia switches on her TV at quarter past eight. What programme will be on? Is there more than one possible answer? Explain why.



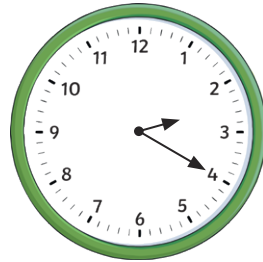
7:50 a.m.	Day Wake
8:10 a.m.	The Morning Show
9:50 a.m.	Today with Heather and Becky
11:40 a.m.	Sunshine Shores
12:50 p.m.	Lunchtime's News
2:00 p.m.	Judge Twinkl
3:20 p.m.	What's in Your Shed?
6:00 p.m.	News Tonight
6:50 p.m.	People From Next Door
7:20 p.m.	Cook and Taste
8:05 p.m.	Country Time
8:35 p.m.	What's That Story?

- 1) Liza matched the digital time to the analogue time. Is she correct? If not, explain her mistake.



6:00 p.m.

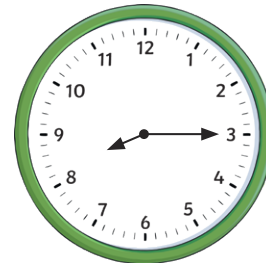
- 2) James woke up and saw this time on his clock:



It was 2:20 p.m. because it was night time.

Do you agree with James? Explain your answer.

- 3) After having a shower, Sofia switches on her TV at quarter past eight. What programme will be on? Is there more than one possible answer? Explain why.



7:50 a.m.	Day Wake
8:10 a.m.	The Morning Show
9:50 a.m.	Today with Heather and Becky
11:40 a.m.	Sunshine Shores
12:50 p.m.	Lunchtime's News
2:00 p.m.	Judge Twinkl
3:20 p.m.	What's in Your Shed?
6:00 p.m.	News Tonight
6:50 p.m.	People From Next Door
7:20 p.m.	Cook and Taste
8:05 p.m.	Country Time
8:35 p.m.	What's That Story?

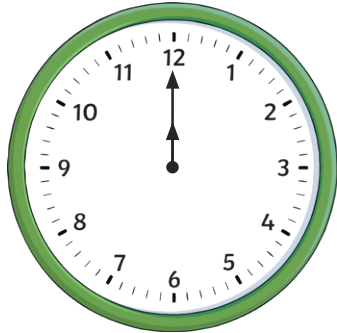
- 1) a) Eli arrived at the cinema and noticed that digits shown on the cinema's digital clock were in descending numerical order. Find 4 different times that Eli could have arrived at.



- b) What times between 6:00 p.m. and 7:00 p.m. will include a digit 3 when displayed on a digital clock? Explore.

- 2) Finlay says, "At 12:00 p.m. and 12:00 a.m. the two hands on a clock are lined up. This is the only time it will happen each day."

Explore.



- 1) a) Eli arrived at the cinema and noticed that digits shown on the cinema's digital clock were in descending numerical order. Find 4 different times that Eli could have arrived at.



- b) What times between 6:00 p.m. and 7:00 p.m. will include a digit 3 when displayed on a digital clock? Explore.

- 2) Finlay says, "At 12:00 p.m. and 12:00 a.m. the two hands on a clock are lined up. This is the only time it will happen each day."

Explore.

