

1) Complete the sentence below:

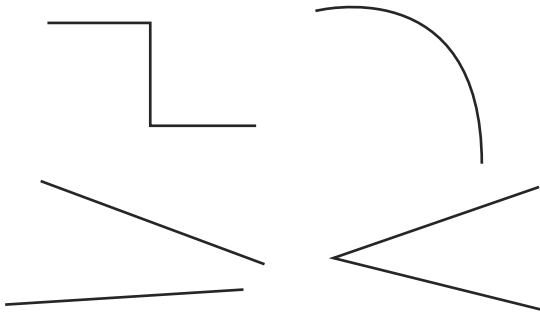
An angle is made when  
two \_\_\_\_\_ lines meet at a point.

If I turn  $90^\circ$ , I will have made a \_\_\_\_\_ turn.

$90^\circ$  is the size of a \_\_\_\_\_ angle.



2) Circle the pictures below that show angles:



twinkl.com

1) Complete the sentence below:

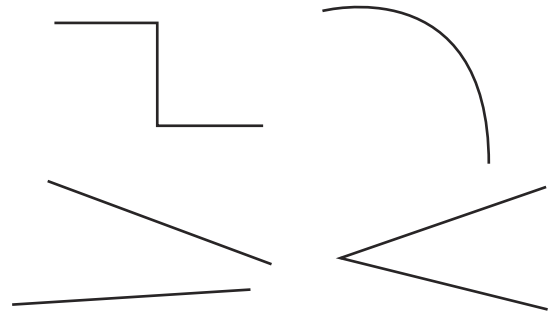
An angle is made when  
two \_\_\_\_\_ lines meet at a point.

If I turn  $90^\circ$ , I will have made a \_\_\_\_\_ turn.

$90^\circ$  is the size of a \_\_\_\_\_ angle.



2) Circle the pictures below that show angles:



twinkl.com

1) If I start facing the circle each time,  
which shape will I be facing after  
each of the following turns?

a quarter turn anticlockwise \_\_\_\_\_

a three-quarter turn clockwise \_\_\_\_\_

a  $90^\circ$  turn clockwise \_\_\_\_\_

a whole turn anticlockwise \_\_\_\_\_

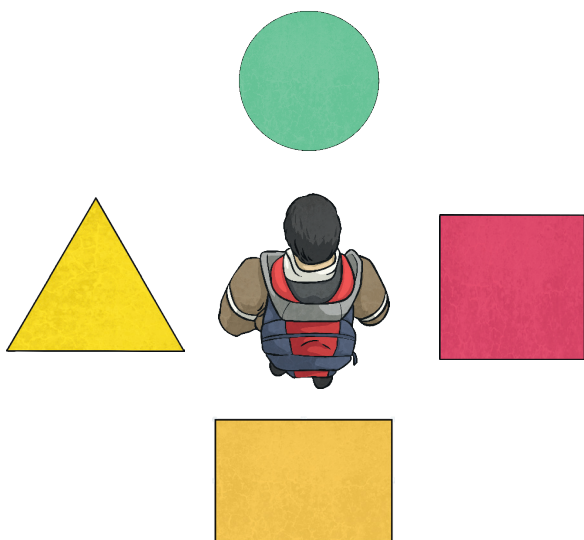


2) Write the turns I would need to make if I started  
facing the square each time and wanted to face:

the rectangle \_\_\_\_\_

the circle \_\_\_\_\_

the triangle \_\_\_\_\_



twinkl.com

1) If I start facing the circle each time,  
which shape will I be facing after  
each of the following turns?

a quarter turn anticlockwise \_\_\_\_\_

a three-quarter turn clockwise \_\_\_\_\_

a  $90^\circ$  turn clockwise \_\_\_\_\_

a whole turn anticlockwise \_\_\_\_\_

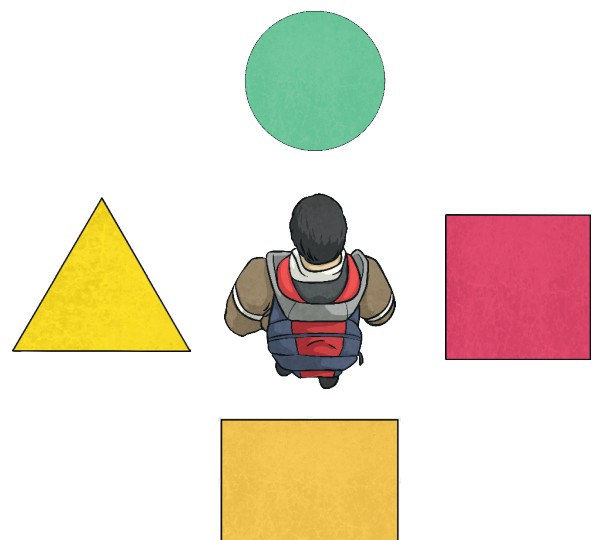


2) Write the turns I would need to make if I started  
facing the square each time and wanted to face:

the rectangle \_\_\_\_\_

the circle \_\_\_\_\_

the triangle \_\_\_\_\_



twinkl.com

- 1) I start facing the triangle and end facing the rectangle. My friends say:



Who do you agree with? \_\_\_\_\_

Why? \_\_\_\_\_



You must have made a quarter turn anticlockwise.

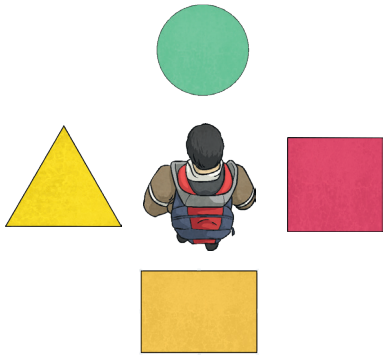
Mira



You turned a three-quarter turn clockwise.

Ian

- 2) Create a path on squared paper for a robot to follow. The angles on your path must only be right angles. Mark a start and finish point at each end. Write a set



of instructions for the robot to follow to walk from start to finish. Use the vocabulary here to help you:

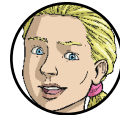
**quarter turn clockwise anti-clockwise forwards**

- 1) I start facing the triangle and end facing the rectangle. My friends say:



Who do you agree with? \_\_\_\_\_

Why? \_\_\_\_\_



You must have made a quarter turn anticlockwise.

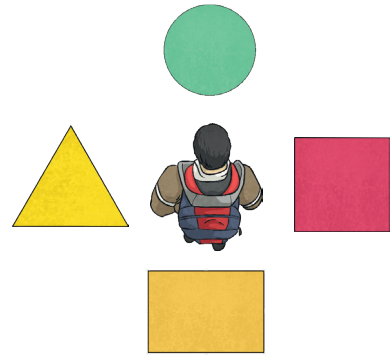
Mira



You turned a three-quarter turn clockwise.

Ian

- 2) Create a path on squared paper for a robot to follow. The angles on your path must only be right angles. Mark a start and finish point at each end. Write a set



of instructions for the robot to follow to walk from start to finish. Use the vocabulary here to help you:

**quarter turn clockwise anti-clockwise forwards**